



@Smile



THE SMILING
VENTILATION

A DETAILED DESIGN

ROBUST AND ANTI-REVERSE
BACK DRAUGHT SHUTTERS

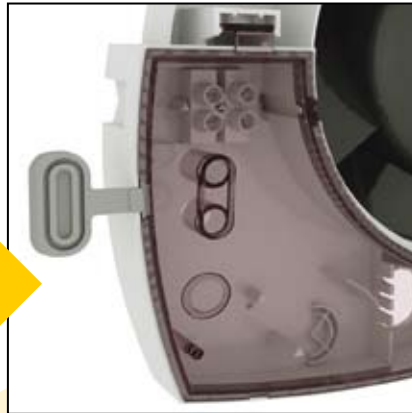


**PATENTED
DESIGN**



EASILY REMOVABLE
FRONT COVER

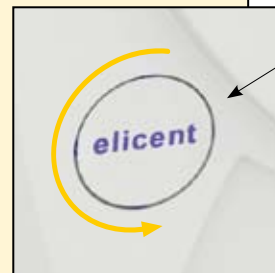
WATER PROOF PROTECTION
THANKS TO THERMOPLASTIC
GASKETS



ORIENTATION ACCORDING TO
INSTALLATION NEED



PIR VERSION WITH
MINIATURIZED SENSOR





- Power flow axial fan to exhaust air directly to the outside or into a medium length ducting.
- Suitable for bathrooms, kitchens, utility rooms, offices ...
- Suitable for wall/panel/ceiling installation (including plastic boards)
- Innovative design and extremely compact dimensions
- Highly aerodynamic profile provided with deflectors designed to increase the fluid dynamics of the fan
- Provided with robust and anti-reverse back-draught shutters
- Easily removable front cover for ease of cleaning
- 100% Speed controllable
- High magnetic permeability induction motor with thermal protection.
- Maintenance-free and Long Life ball bearing motor
- IPX4 protection
- Compliance with IEC 60335-2-80, LVD 2006/95/CE, EMC 2004/108/CE

VERSIONS



COMFORTIMER

New microchip Timer version adjustable from 3 to 25 mn with overrunning at low speed for an **energy saving upto 64%** compared to a standard timer version. The low speed guarantees increased silence and energy saving though maintaining a satisfying exhausting efficiency. Version particularly suitable for hotels, hospitals, private homes and for all those applications where silence is a must.



COMFORT HYGRO

Combines to Comfortimer technology a microchip humidity sensor adjustable from 40 to 80% of R.H.



MHY SMART HUMIDITY CONTROL

Provided with the latest microchip technology. Operation: automatic and progressive increase / decrease of the motor speed according to the percentage of R.H.



2 SPEED 2 Speed version for continuous running



P.I.R. Provided with passive infra-red sensor and adjustable timer from 3 to 25 mn



SELV (12 V a.c.)

ACCESSORIES



EASILY REMOVABLE METAL GREASE FILTER

AIMING TO THE HIGHEST TECHNOLOGICAL LEVEL

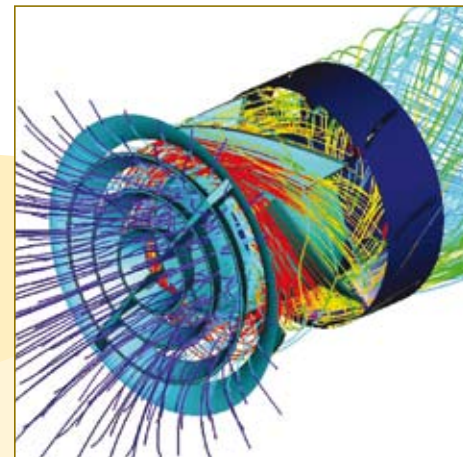
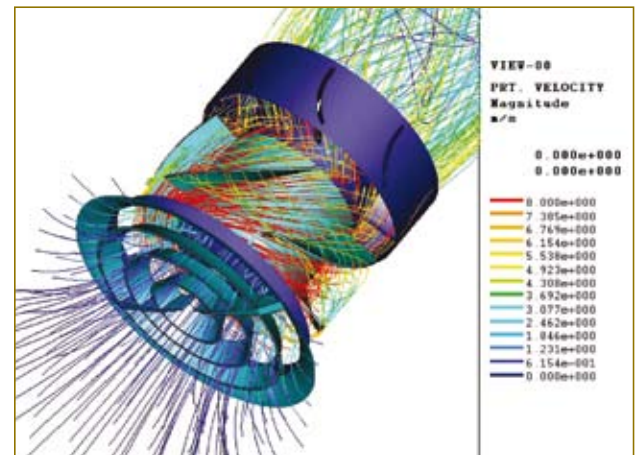
“**E-SMILE** is a combination of goals
we wanted to achieve”

Low energy consumption, silent operation,
high efficiency, innovative industrial process,
avant garde design.



Optimized design thanks to CFD
(Computational Fluid Dynamics) analysis

CFD ANALYSIS



THE SMILING VENTILATION

E-SMILE is emotion at first sight.

Its unique, compact
and dynamic line

brings life into your home.

SMILE WITH **E-SMILE**

to energy saving

to acoustical comfort

to efficiency

to environment

from **5 Watt!!**

from **19 dB(A)!!**

90 m³/h
70 Pa



@Smile

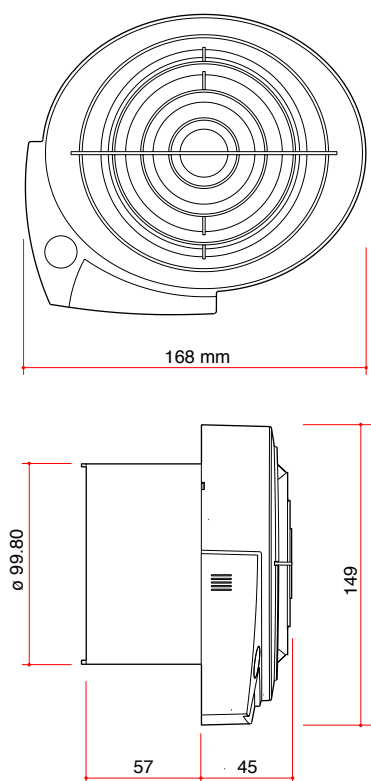
TECHNICAL SPECIFICATION

PERFORMANCE

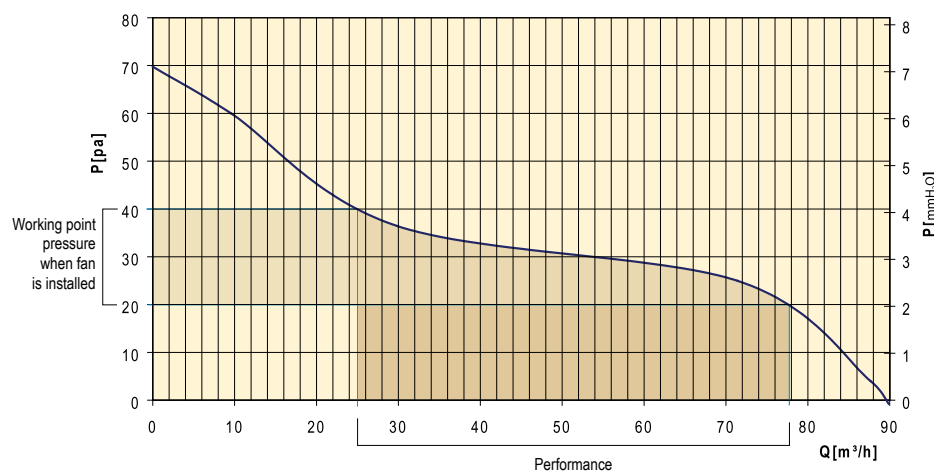
	e-smile	e-smile comfortimer	
AIRFLOW @ 230 V - 50 Hz	90	90 / 60	m ³ /h
PRESSURE	70	70 / 30	Pa
POWER	7.5	7,5 / 5	Watt
SOUND PRESSURE	29,4	29,4 / 19	dB(A)*
PROTECTION	IPX4	IPX4	
MARKED	CE	CE	

* at 3m in open field

DIMENSIONS



CURVE



MAICO ITALIA Spa
Via L. Da Vinci, 4 - 25017
Lonato del Garda - Brescia - Italy

www.elicent.it

elicent@elicent.it